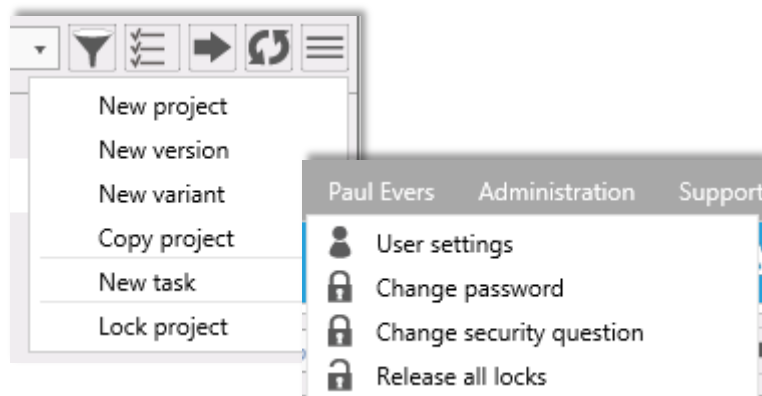


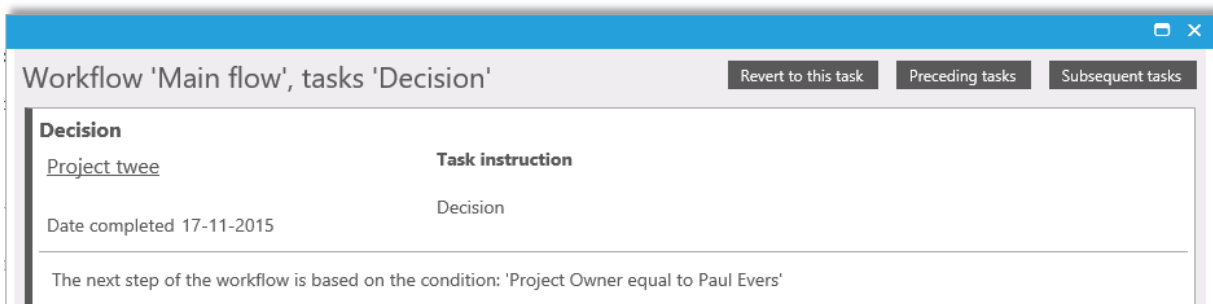
Locking

Feature	Description
Locking mechanism	<p>Portfolios, Projects, Markets and Partners can be locked by the user. While a portfolio, project, market or partner is locked the data cannot be saved by another user.</p> <p>In the 'User settings' menu the user can release all locks. The locks are also released when signing out of Flightmap.</p>



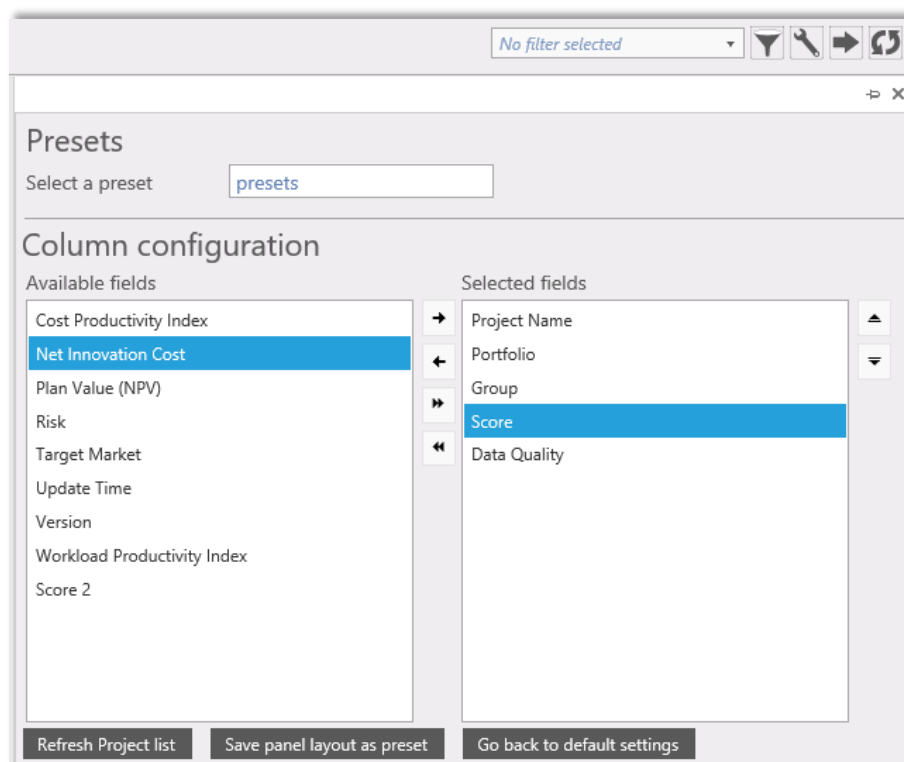
Workflow

Feature	Description
Go back to a previous step	An active workflow can be reverted to a previous task. The workflow will be restarted from that point.
Previous task items	Previous task items (like the entered comments) can be included in the email that will be sent when a new task is created.



Column selection

Feature	Description
Column selection in Portfolio list and Project list	<p>The column selection in the Portfolio list and the Project list has been redesigned.</p> <p>When clicking on the configuration-button (tool-icon) a panel will be shown with Preset selection and column configurations. Here you can select which columns you want to show. The order of the columns can also be set.</p> <p>When saving the panel layout the sorting and grouping performed in the list will also be included.</p>



Various

Feature	Description
Selection of saved filters	When selecting or deselecting saved filters the changed selection will be applied when closing the filter-dropdown.
Balance chart	An option has been added to sort the groups in the Balance chart alphabetically (instead of sorting by size).