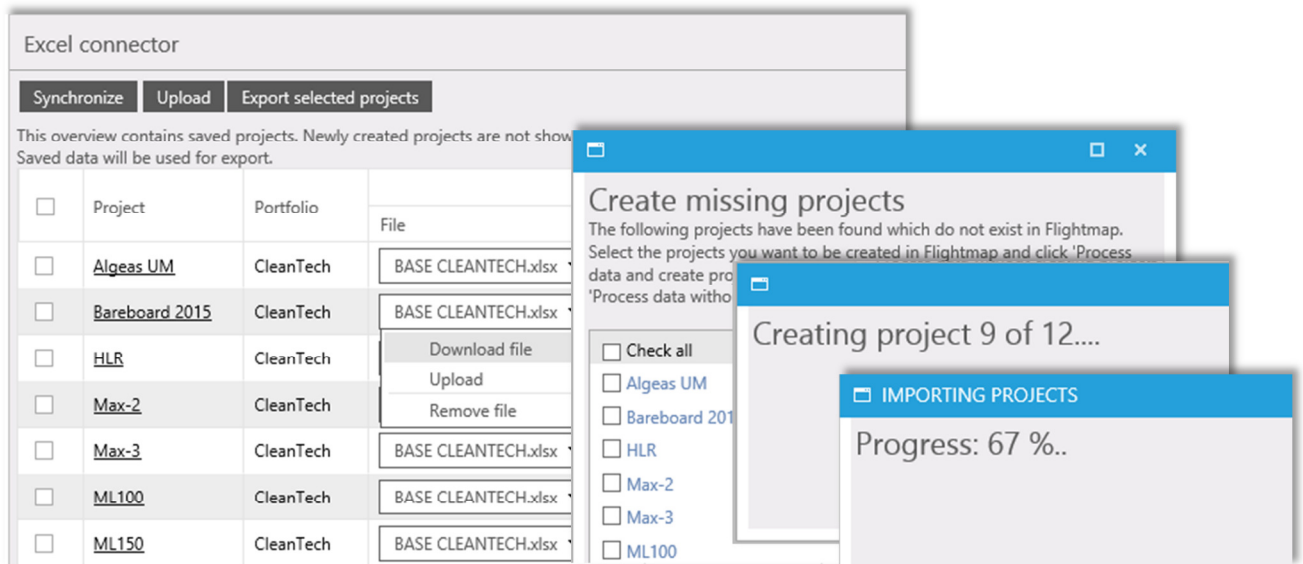


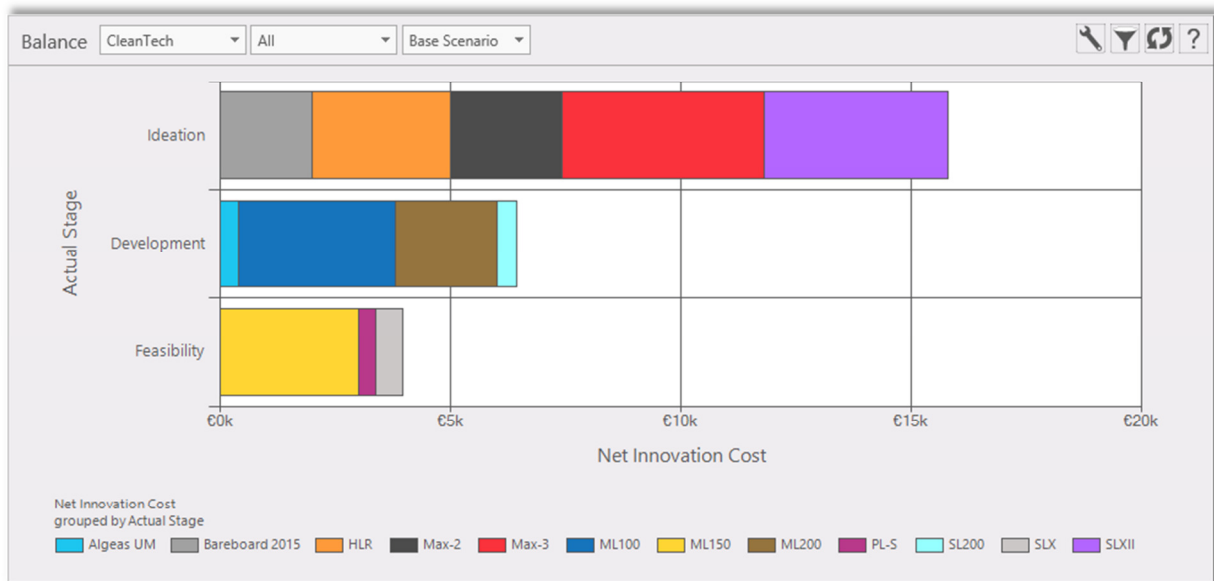
Excel connector

Feature	Description
Importing and exporting project data	<p>The connectivity platform Flighthub (introduced in Flightmap 4.1) is now extended with an out-of-the-box two-way Excel connector. Project data can be imported from and exported to Excel workbooks. Flightmap can generate Excel workbooks which can be edited offline. After uploading the edited workbook the data will be imported into the user's sandbox. From this sandbox the data can be checked, analysed and saved.</p> <p>Workbooks generated by other systems can also be imported, as an alternative to a direct connector to those systems.</p> <p>Note that the Flighthub module is needed. Ask for pricing.</p>



Charts

Feature	Description
Balance stacked by project	The Balance chart can be configured to show the data stacked by project
Hide not used categories	Not used categories for the color option in the Bubble and the Funnel chart are removed from the legend. With an option in the configuration panel these unused colors will be shown in the legend. In the Balance chart the same goes for the empty grouping options.



Various

Feature	Description
More workflow flexibility	It is now possible to specify per stage the labels of the workflow-items. Also the reject- and kill-statuses have been made configurable.
Headers in datapages	It is possible to configure Headers in datapages. These datapages will be more structured.
Static headerrow in lists	In the lists (Portfolio list, Project list, Budget list) the headerrow is set to static. When scrolling the headers remain visible.
Messages when data cannot be saved	When e.g. a project cannot be saved a message will explain the reason for this: <ul style="list-style-type: none"> • No proper rights for saving • Project is frozen • No proper rights to edit as a result of the current workflow status.
Composition overview	The page Composition overview used to be frozen when the user has no saving rights for the selected portfolio. Now this page can be edited to explore the composition possibilities where these changes will have effect the data in the sandbox.